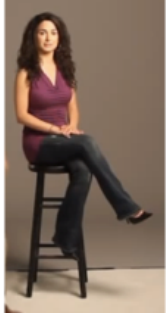


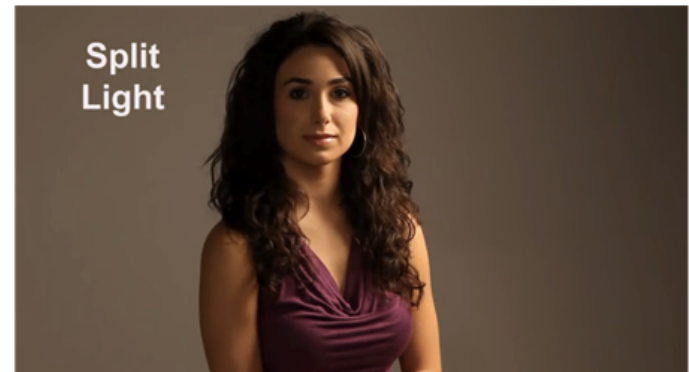
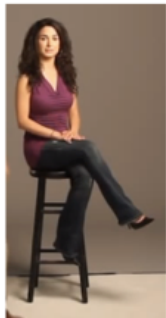
Rembrandt Light



Rembrandt Light

There should be a triangle of light on the cheek opposite the source.

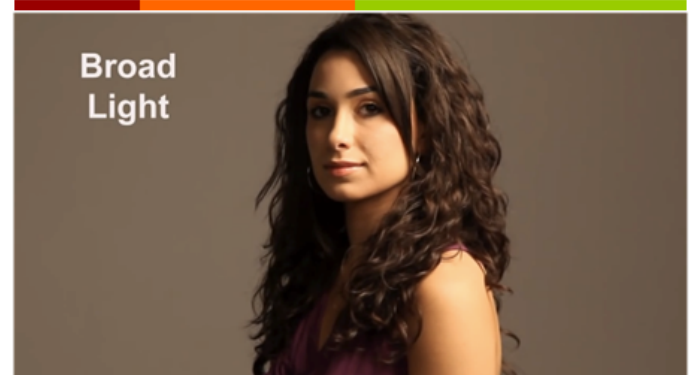
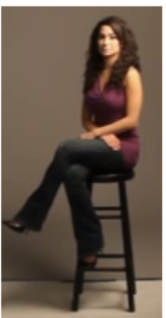
Split Light



Split Light

There should be a strong highlight side and a strong shadow side on the face.

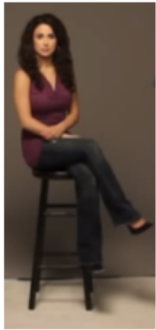
Broad Light



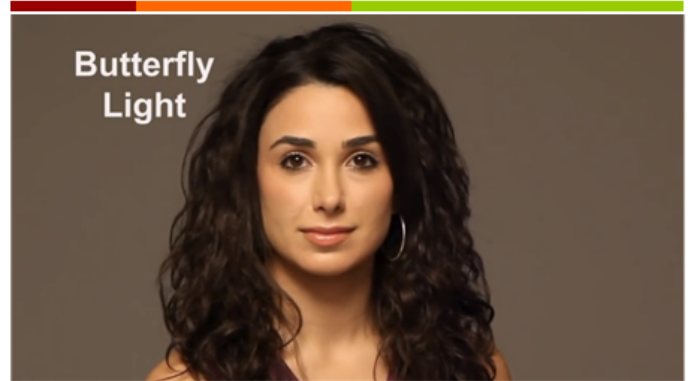
Broad Light

There should be a small triangle of light on the cheek opposite the light, which is angled away from the source.

## Butterfly Light

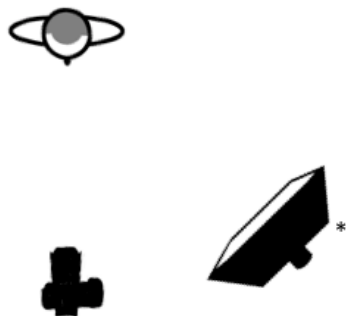
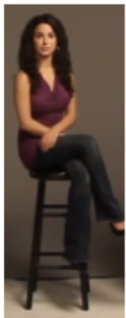


\*elevated on a small boom, angled down



There should be a shadow underneath the nose, with slight shadows on the cheeks and chin.

## Loop Light



\*elevated on a small boom, angled down



Compared to Rembrandt, the light is elevated and angled down. There's a small loop shadow on the cheeks and under the nose.

### Notes:

I used a large Photoflex softbox.  
Her shoulders were always turned slightly.  
I never shoot a woman sitting straight to the camera. It is a very unflattering look.

### Additional Resource:

Portrait Lighting for Photography & Video  
[www.theSlantedLens.com/5portrait/](http://www.theSlantedLens.com/5portrait/)